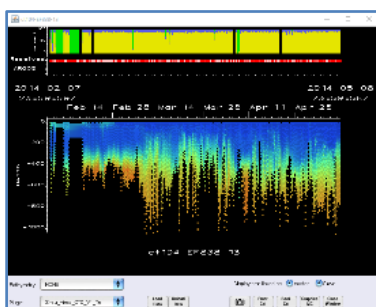
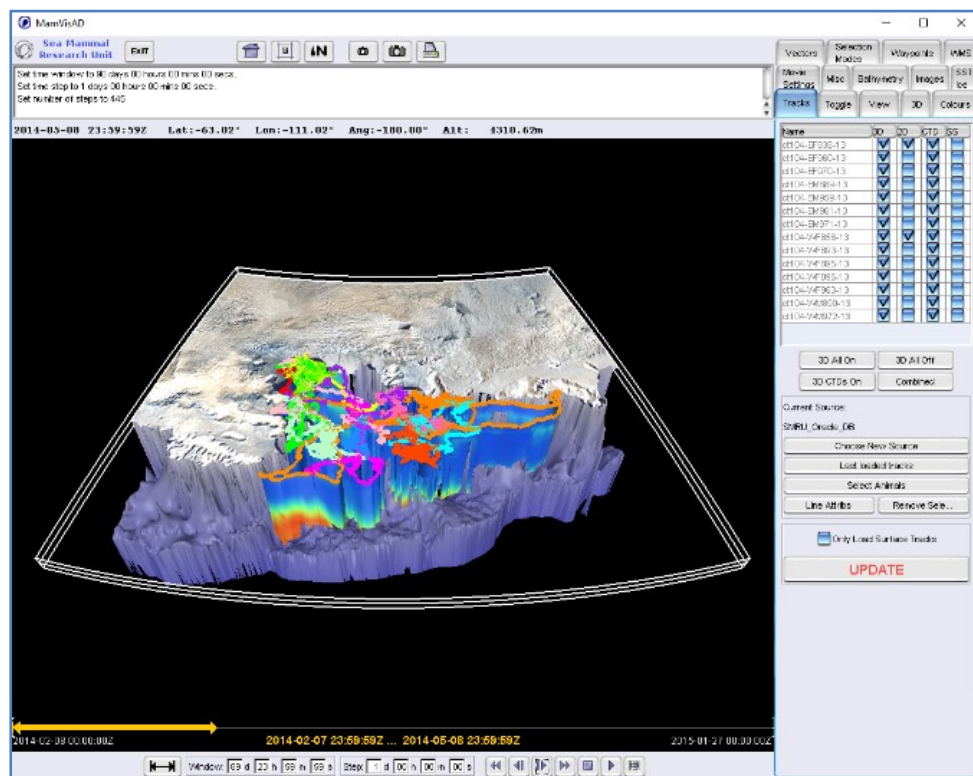
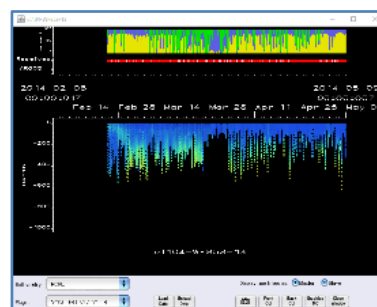


# MamVisAD: Interactive exploration of tag data

MamVisAD is a powerful visualisation package developed at SMRU specifically for the display and investigation of data from our marine telemetry devices.



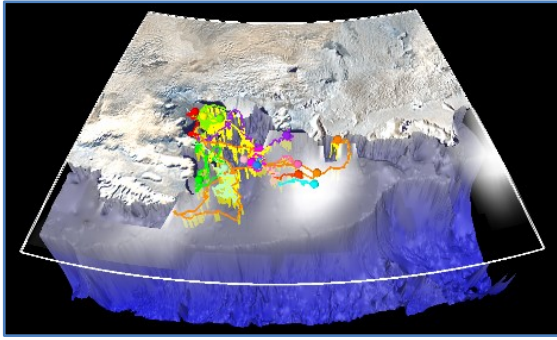
Temperature  
-3.0 2.5



*Comparison of temperature profile data from tags deployed on a southern elephant seal and a Weddell seal by the iStar project*

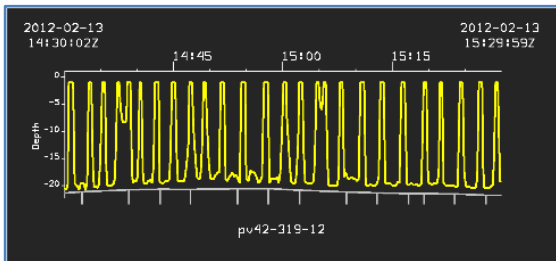
<https://www.smru.st-andrews.ac.uk/Software/MamVisAD/>





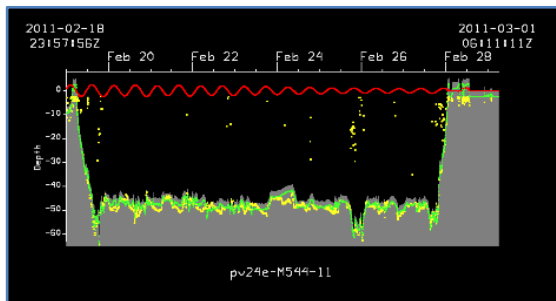
## Bathymetry, SSTs and sea-ice fields

Sea ice forming around Antarctica at the start of March during the NERC iStar deployment.



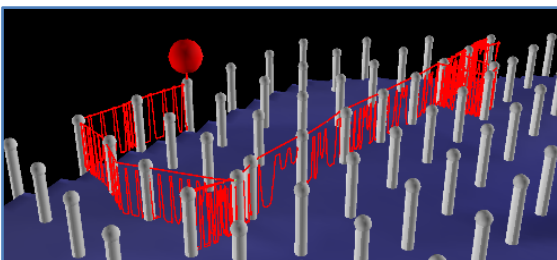
## Linked time series displays

An hour of detailed dive profiles from a GSM tag on a harbour seal in around 20 metres of water.



## Plugin architecture for custom features

Plugins being used to investigate how a tide prediction model may help to fit dive depths from a GPS tag on a harbour seal to a hi-res bathymetric dataset.



## Images and movies for presentations

Frame from a movie showing the track and tide-adjusted dive profiles for a GSM tagged harbour seal visiting an offshore windfarm.

