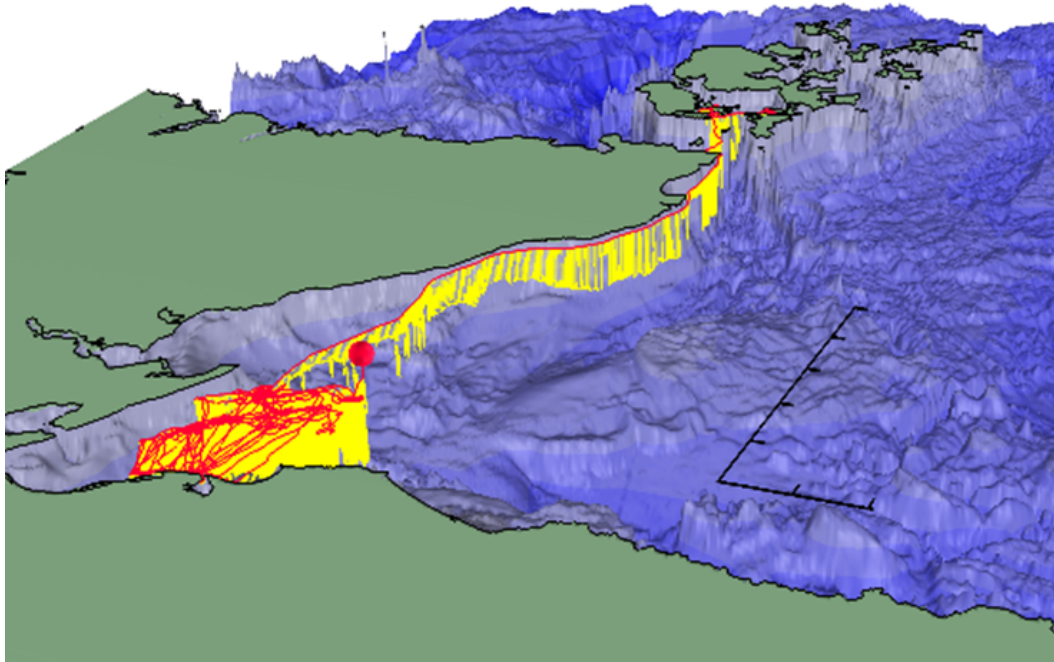


Gen2 GPS Phone Tag

Store and forward detailed track and behavioural data



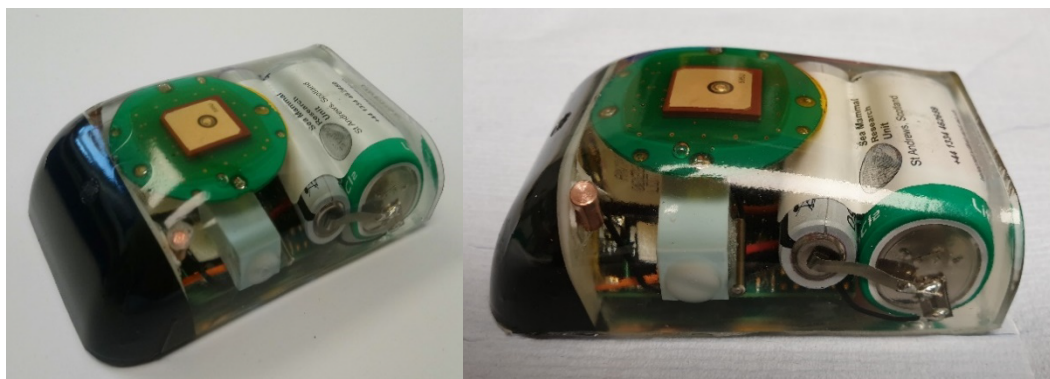
Typical Individual dive profiles and GPS track of a harbour seal swimming from the Orkney Islands to the Moray Firth, Scotland.

Dive and track data: relayed via Vodafone M2M GSM by a SMRU-IG GPS-Phone tag; Bernie McConnell, Marine Scotland, Marine Mammal Scientific Support Programme.

Visualisation: SMRU-IG MamVisAD software. Graticule ticks at 10 km intervals.

Bathymetry data (exaggerated): EMODNET. Coastline: EEA Europe.

Recent updates include Prey Capture Attempts & Swim Effort Analytics



- Collects high resolution and accurate location and behavioral data
- Relays data ashore when the tag next comes within mobile phone (GSM) coverage
- Hydrodynamic shape
- Reduced snagging issues – no external antenna

Specifications

<i>Depth rating (m)</i>	500
<i>Pressure (dbar)</i>	Range 0 to 2000
	Accuracy 2.5 @ 1000
	Resolution 0.06 m
<i>2G/3G engine</i>	Quad band GSM/UMTS
<i>GPS</i>	Fastloc® 3
<i>Wet/dry switch</i>	From ocean to fresh water
<i>Accelerometer</i>	128 Hz sampling
<i>Longevity</i>	Up to 1 year (5 min GPS interval, 6 hrs GSM)
<i>Max dimensions (mm)</i>	102 x 68 x 38
<i>Weight (g)</i>	300
<i>Archival</i>	Full TDR history @ 1 Hz
	Pitch and Roll @ 1 Hz
<i>Transmitted Data*</i>	GPS Every successful grab
	Dive Profiles Every profile 20-point broken stick
	Haul-out
	2-hr summary Max depth
	Pitch & Roll ^(Av) Descent, bottom and ascent
	Swim Effort ^(Av) Descent, bottom and ascent
	Prey Capture Attempt Descent, bottom and ascent

*Subject to adequate GSM coverage

